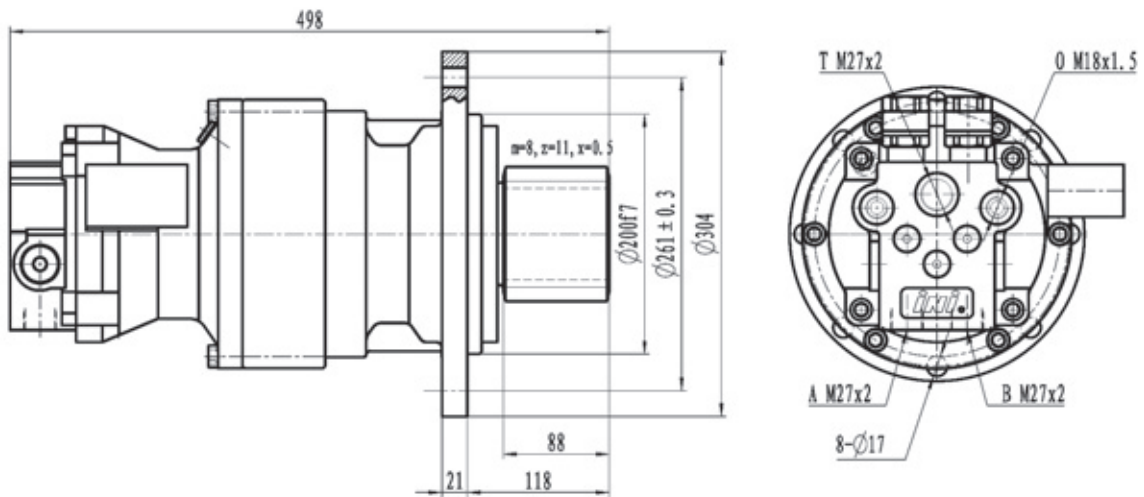
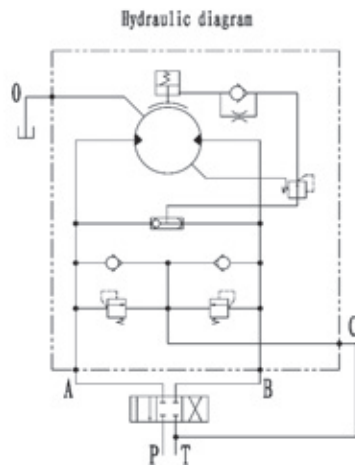


Dimension



Technical Data

| Output Torque<br>(N · m) | Speed<br>(r/min) | Ratio | Rated Pressure<br>(MPa) | Displacement<br>(ml/r) | Motor Displacement<br>(ml/r) | Weight<br>(Kg) | Excavator type<br>(Ton) |
|--------------------------|------------------|-------|-------------------------|------------------------|------------------------------|----------------|-------------------------|
| 1900                     | 0-102            | 19.46 | 22                      | 701.436                | 36.045                       | 70             | 7.5T                    |



1. The neutral position of the control valve must be "0" type.
2. The oil boost port T of hydraulic motor should be connected with T port of control valve.
3. Maximum pressure of the brake is 5MPa.